

User Manual

AIS-700 Class B AIS Transponder



SKYNAV Technology, Inc.
 ADD 6F., No105, Xicheng Rd., Banqiao Dist., New Taipei City 220, Taiwan (R.O.C)
 Tel:886-2-26870869 / Fax:886-2-26870096
 www.skynav.com.tw / service@skynav.com.tw

Made in Taiwan

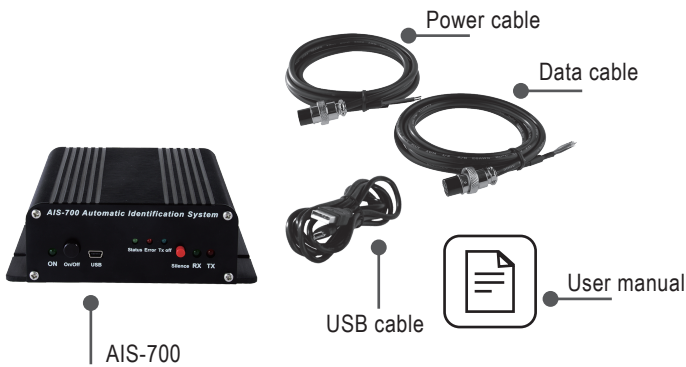
Warning

This device has some optional user activated functionality which may not be permitted in some countries. If you are in any doubt, please check with your local authorities.

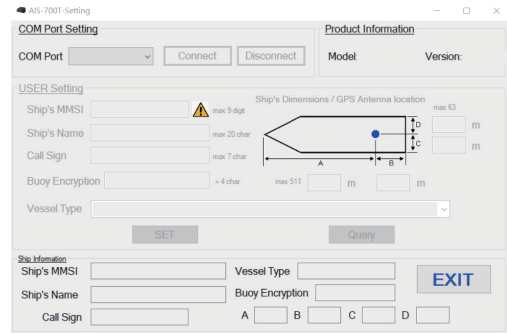
Notifications

- Do not input voltage over 40V.
- Stay away from fire.
- Do not crash by Human negligence.

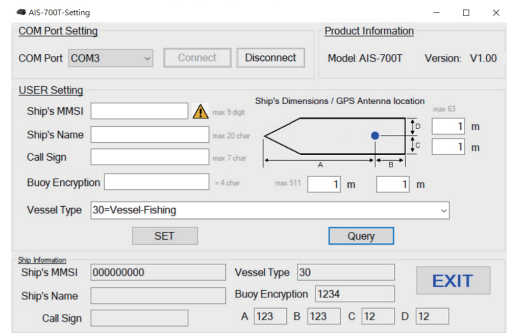
What do I need?



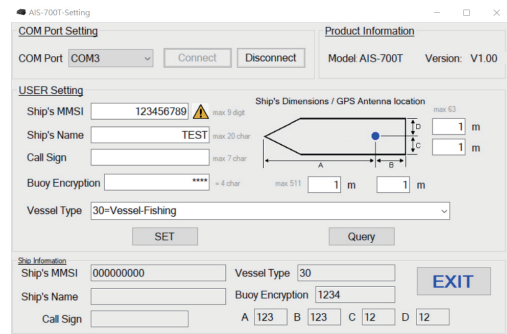
- 3 Plug in the power cable and provide 12~24V power input.
- 4 Turn on the AIS-700.
- 5 Connect to your computer by USB cable.
- 6 Choose the correct COM port and click "Connect".



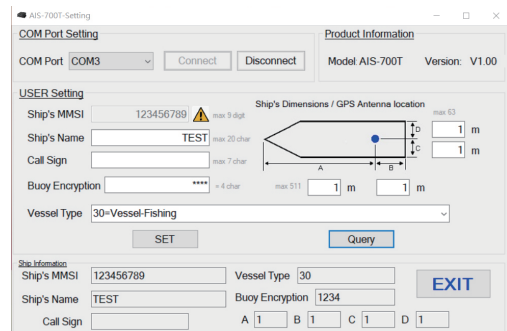
- 7 Click "Query" to load default setting.



- 8 Enter your information of ship then click "SET".



- 9 Click "Query" to make sure the setting.

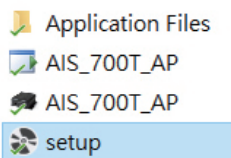


- 10 Click Disconnect and EXIT.
- 11 Power off the AIS-700.



Basic Setting

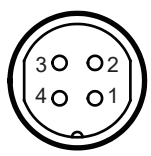
- 1 Install the setting software "AIS_700T_AP"



- 2 Open the software.

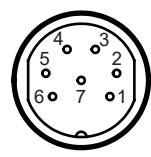


■ Connections Define



Power

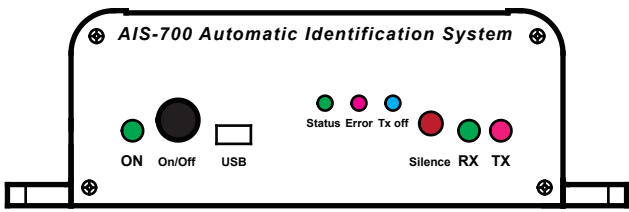
PIN	Cable
1 V-	Black V-
2 Reserved	Red V+
3 V+	
4 Reserved	



Data

PIN	Cable
1 GND	Black GND
2 Reserved	Blue Reserved
3 Reserved	Yellow Reserved
4 T- RS422	Green T- RS422
5 T+ RS422	White T+ RS422
6 RS232 Tx	Gray RS232 Tx
7 RS232 Rx	Brown RS232 Rx

■ LED Flash Code



ON (Green LED)

Steady Light	➔	12V Power input
Dark	➔	Low power input (<5V DC)

Error (Red LED)

Steady Light	➔	MMSI is not properly programmed or MMSI=0
Flashing	➔	<ul style="list-style-type: none"> Background noise level exceeds allowable threshold(-77dBm) GPS is unable to lock 3D fixed after 3 minutes of losing GPS signal
Dark	➔	others

Tx off (Blue LED)

Steady Light	➔	While Silence button is pushed
--------------	---	--------------------------------

RX (Green LED)

Steady Light	➔	While the transponder is receiving AIS data
Dark	➔	While the transponder is not receiving AIS data

TX (Red LED)

Steady Light	➔	While the transponder is transmitting own AIS data
Dark	➔	While the transponder is not transmitting own AIS data

Status (Green LED)

Steady Light	➔	While transponder or Wi-Fi or Ethernet initialize finished
Flashing	➔	<ul style="list-style-type: none"> Wi-Fi initialize fail Ethernet initialize fail

⚠ Notifications

- If you need to continue to set another AIS-700, you do not need to choose your COM Port. Just click connect and repeat step 8 to 11.
- Please remember to restart the AIS-700 before test and use it.
- If you want to receive the signal of AT-106, please set the same encrypt code with each other.

■ Specification

- Frequency Range : 156.025 MHz ~ 162.025 MHz
- Data Rate: 9600 bps (GMSK / FM)
- Tx Output Power : 2 Watt
- Rx Sensitivity : < -107dBm @20% PER
- AIS Channel 1 : CH 87B (161.975 MHz)
- AIS Channel 2 : CH 88B (162.025 MHz)
- Supply Voltage : 9V ~ 40V DC
- Size : 140 mm x 131.4 mm x 46 mm
- Weight : 600g
- Operating Temperature : -15°C~60°C
- Storage Temperature : -20°C~70°C

■ Warranty

Remark:

- 1.One-year warranty effects from the purchase date.
- 2.The warranty covers any manufacturing technical defect excluding breakage.
- 3.The warranty does not cover faults resulting from operation careless handling or not the following instruction. Also, to electric shock cases.

Please keep this warranty card to retain buyer's legal rights. No replacement if lost.

Distributor

Sold Date: ___ / ___ / ____ (dd/mm/yyyy)