

User Manual

AT-206 Solar Powered AIS AtoN Buoy Tracker



SKYNAV Technology, Inc.
 ADD 6F., No105, Xicheng Rd., Banqiao Dist., New Taipei City 220, Taiwan (R.O.C)
 Tel:886-2-26870869 / Fax:886-2-26870096
 www.skynav.com.tw / service@skynav.com.tw

Made in Taiwan

Warning

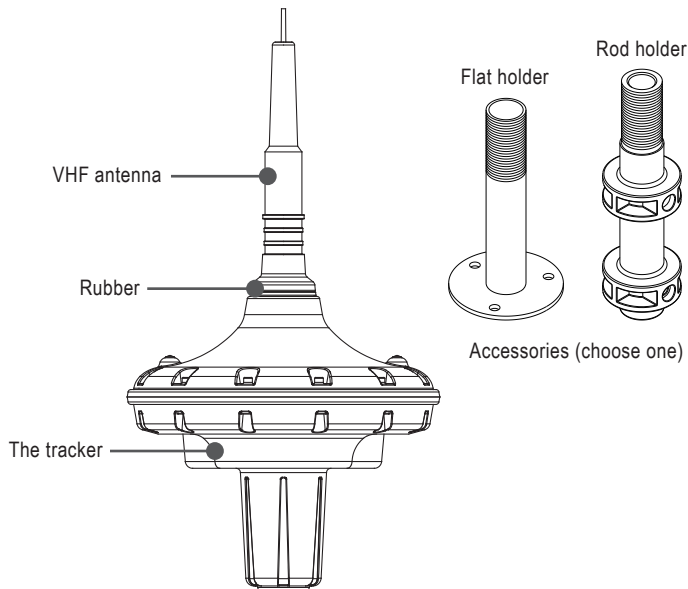
AT-206 is a fully certified Type 1 AIS Aids to Navigation buoy tracker. This device has some optional user activated functionality which may not be permitted in some countries. If you are in any doubt, please check with your local authorities.

Notifications

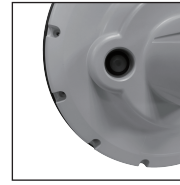
- Stay away from fire.
- Do not crash by Human negligence.

What do I need?

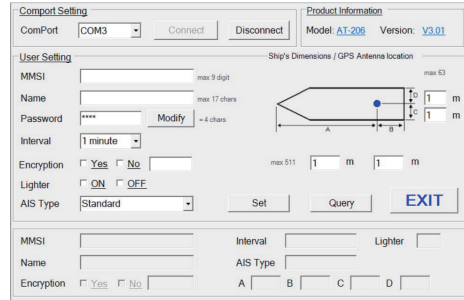
The tracker, Rubber, VHF antenna



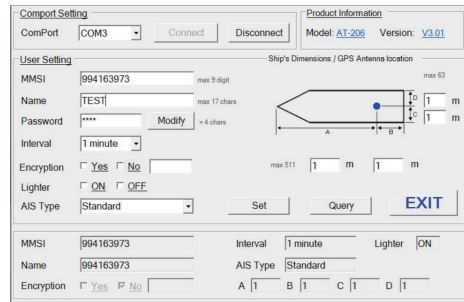
- 1 Plug in the data cable.
- 2 Turn on the AT-206.
- 3 Connect to PC by USB.



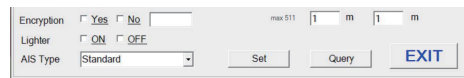
- 4 Start the AT-206 setting software.



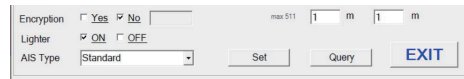
- 5 Choose the right COM Port and click the "Connect".
- 6 Enter the MMSI, Name (17 characters) and select Interval.
- 7 Enter the information of your vessel or buoy. (The blue point is the position of our tracker.)



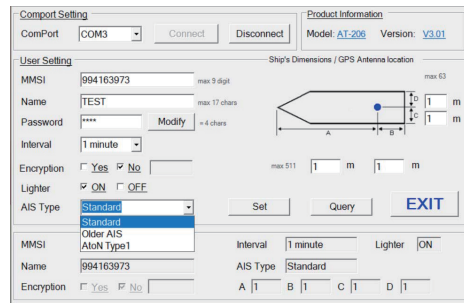
- 8 Select the Encryption function and enter the encrypt code if you need. (The encrypt code should same with your AIS transponder.)



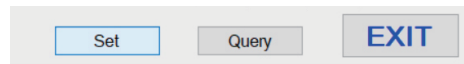
- 9 Select the ON/OFF of night lighter.



- 10 Select AIS type. (Standard is for vessel ; AtoN is for buoy ; Older AIS is for vessel with older chartplotter it can't receive Name of vessel.)



- 11 Click the "Set".



- 12 Click the "Query" to check is the information set up correctly done.
- 13 If yes, Click the "Exit".

Software setting

- Download and install the software on PC.
- Connect the supplied USB cable to the AIS tracker and PC.
- Open the software and choose the right COM Port and required model of the device.



User Manual

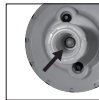
AT-206 Solar Powered AIS AtoN Buoy Tracker

14 Check the device is work

- Check the Battery status:
Red and green light flashing 1~9 times shows battery capacity 10~99%.
For example:
Red light flashing 3 times → battery capacity 30%
Red light flashing 6 times → battery capacity 60%
Red light flashing quickly for 10 seconds shows the battery is less than 50%
- GPS searching status:
Green light flashing is searching GPS.
Please put the Tracker outdoors or along the window in order to receive the GPS signal.
After 40~70 seconds, the green light stops flashing while the GPS signal is fixed.
- AIS signal status:
Flashing red & green 3 times at the same time means the AIS data is transmitting, once the signal transmitted the light will stop flashing.
- Congratulations, you set the Trackers successfully.

⚠ Notifications

- If you need to continue to set another AT-206, you do not need to re-enter your password and COM Port.
Just click connect and repeat step 6 to 12.
- Please remember to restart the AT-206 before test and use it.
- The SOS button is inside the fixing hole.
(Optional function for vessel user)



■ Installation

- Fasten it properly while installing the antenna and the transparent cover.
- Setting it on the target that you want to track. And make sure the environment is outdoors without hindrance.
- Please install AT-206 more than 1 meter above sea level to increase transmission range.
- Install at the highest position.

■ LED Flash Code

Flashing 1~9 times (red & green) to show battery level 10~99% while turning on the tracker	➔	Battery status
The red light continues lighting	➔	You didn't set the MMSI and vessel name correctly
Fast flashing red after showing battery status	➔	Low power warning that the power is less than 50%
Flashing green per second	➔	GPS signal searching
Green light stop flashing	➔	GPS signal fixed
Flashing red & green for 2 times per second	➔	Transmitting AIS data

■ Application

Fishing buoy, Marine observatory, Offshore platform, Weather buoy.

Maintain

- Please replace the battery per year to ensure the stability.
- Please replace the waterproof rubber every 8~12 months to prolong the product life.

■ Specification

- Quad Band : 161.975 MHz / 162.025 MHz
- Output Power : 2 W
- Battery : 12.6V 3200 mAh
- Battery Type : Rechargeable Li-ion battery
- Operating time : Over than 1 year (reporting interval: 3 min)
- Size (Main Body) : 19.7 cm x 21.2 cm
- Weight (Main Body) : 850g
- Waterproof : IPX8
- Operating Temperature : -10°C~60°C
- Storage Temperature : -20°C~70°C

■ Warranty

Remark:

1. One-year warranty effects from the purchase date.
2. The warranty covers any manufacturing technical defect excluding breakage.
3. The warranty does not cover faults resulting from operation careless handling or not the following instruction. Also, to electric shock cases.

Please keep this warranty card to retain buyer's legal rights. No replacement if lost.

Distributor

Sold Date: ___ / ___ / ____ (dd/mm/yyyy)